

Survey

We conducted a 12-question survey via email with “snail mail” and follow-up telephone calls to those without email. 133 surveys were sent to parishioners’ email, 30 to snail mail (many are homebound), and 89 to friends. 66 surveys (63 online and 3 via mail/phone follow-up) were returned representing 98 parishioners, 6 children and 6 friends (for total of 110 people). Email response rate is therefore 74%.

Attendance

6 of the respondents are not current parishioners.

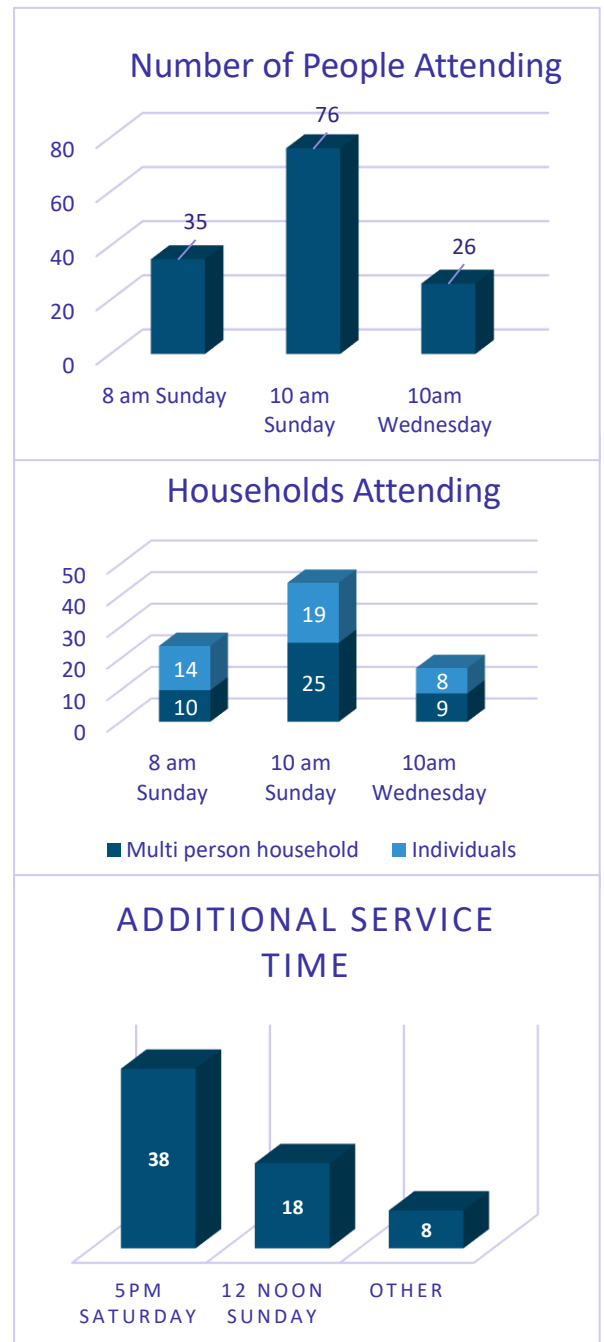
- 35 people attend Sunday at 8am
 - 76 people attend Sunday at 10am
 - 26 people attend Wednesday at 10am
- Please note: some people attend more than one service.

Since social distancing will require us to keep 6’ distance between households (families or individuals), we have cut the data to show how many households attend the services:

- 24 households attend 8am
- 44 households attend 10am
- 17 households attend Wednesday

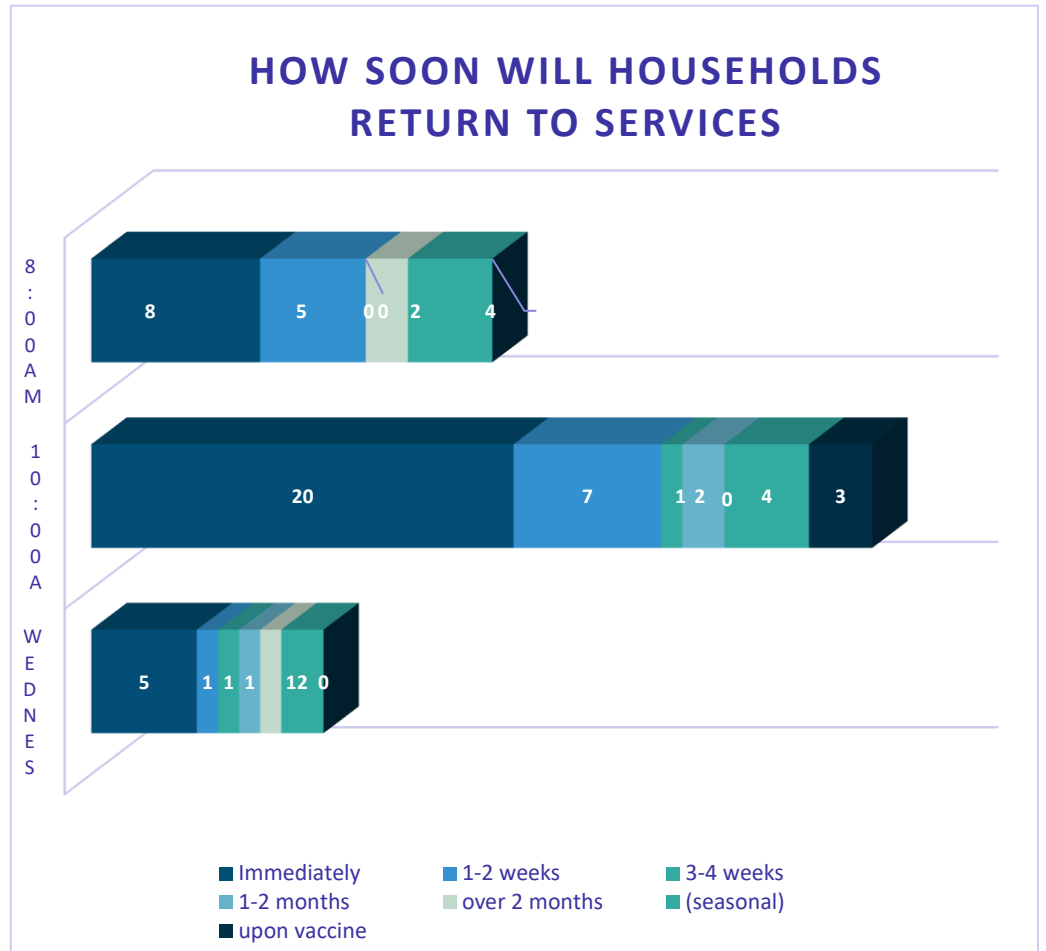
Please note: some households attend more than one service.

In the event a service needs to be added to the schedule, the overwhelming majority of households prefer Saturday at 5pm.



When to regather for in-person worship

Of those households, approximately 40% will return immediately to church while the remainder will be returning to church more gradually.



Over the summer months (<2 months), we will need to plan for 77% of our households to regather for worship.

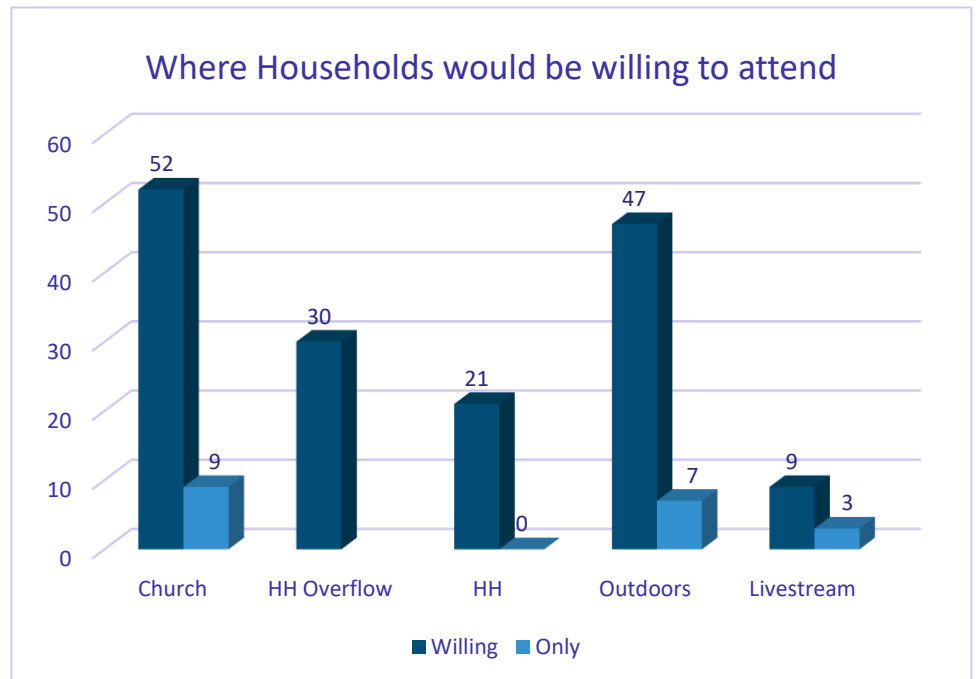
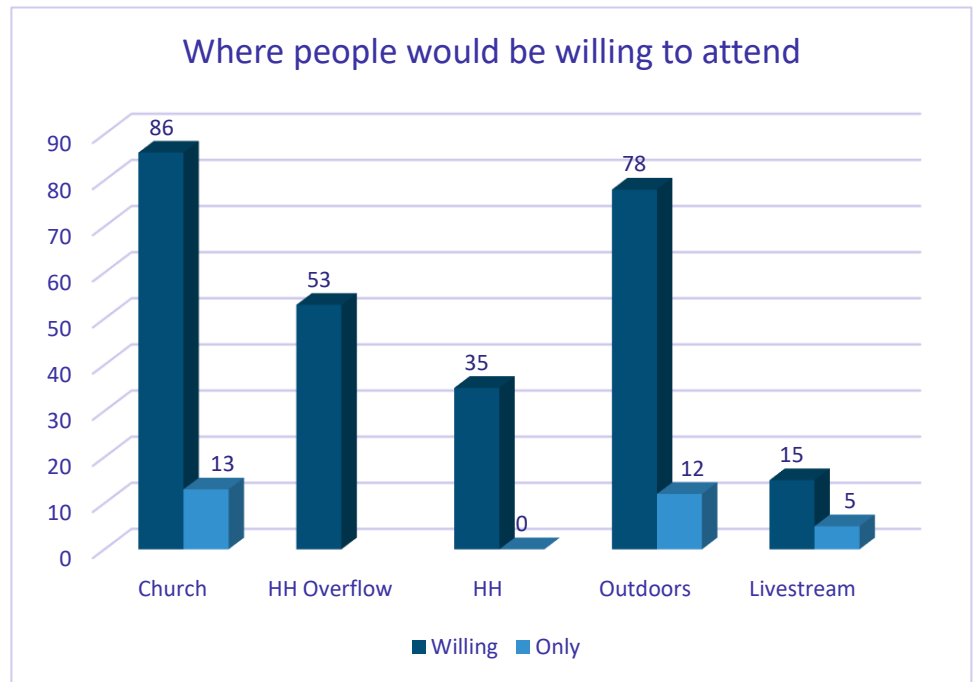
- 13 households at the 8am service
- 30 households at the 10am service
- 8 households at the Wednesday service

Where to regather for worship

Most of our parishioners wish to return to services in the church or outside; with over 50% willing to watch the services from Houg Hall if the church becomes too full to be safe.

Looking at the household view still shows the same ratios.

The importance of continuing to live stream the services is clear as some will not attend in person and will only attend via live stream.



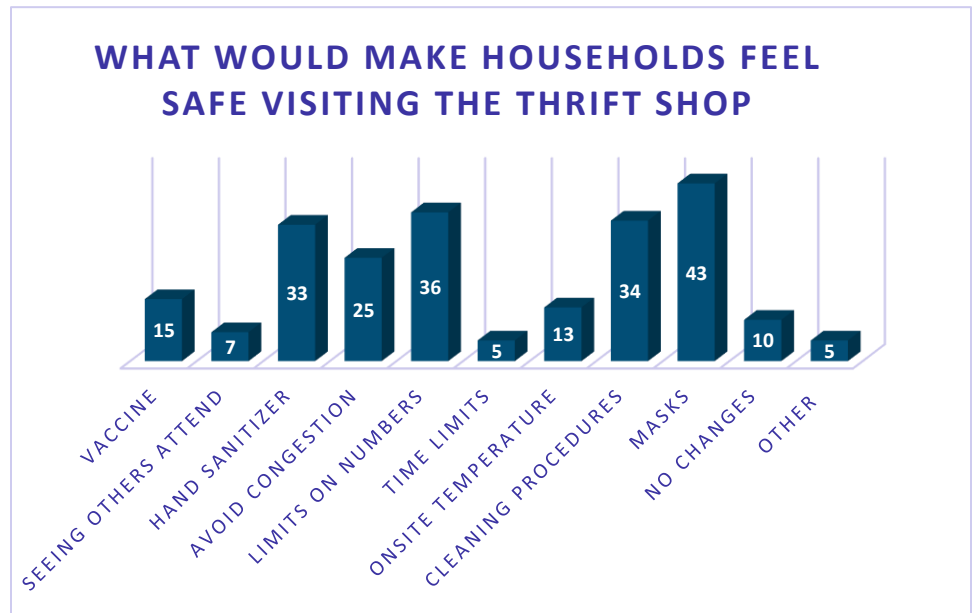
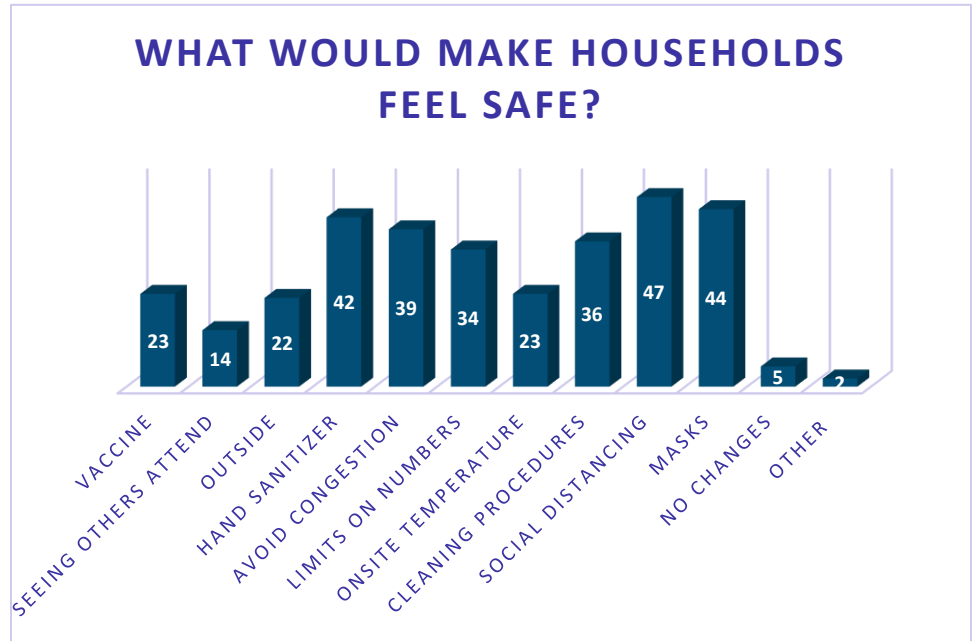
Feeling safe at worship

Our households are extremely interested in

- social distancing,
- knowing that masks are required,
- avoiding congestion and
- knowing the cleaning procedures of the facilities,

in addition to other actions.

Similarly, they would feel comfortable visiting the Thrift Shop with masks, limits on the number of people shopping at the same time, knowing the cleaning procedures and availability of hand sanitizer.

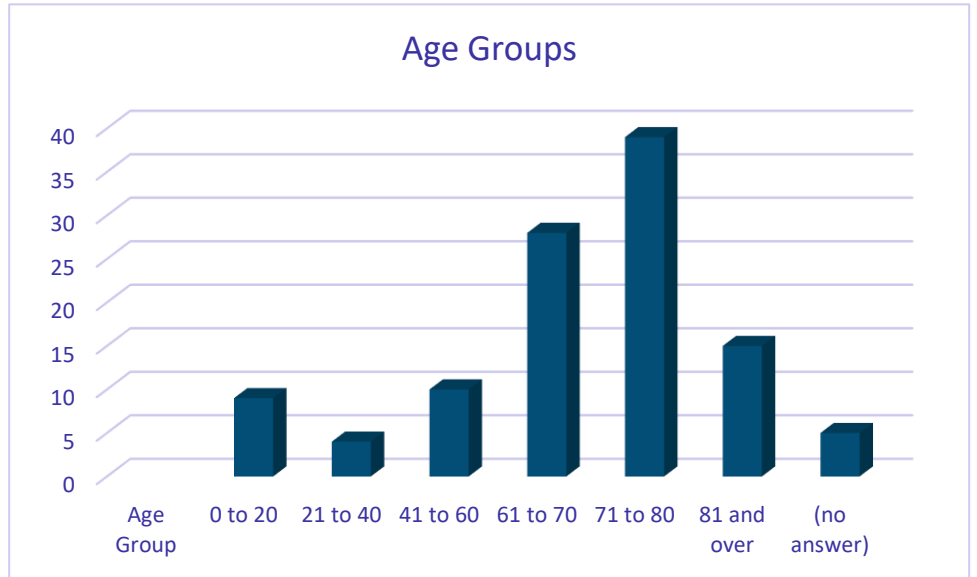


Children

Four households responded with children. They are comfortable returning between immediately to 1-2 months (1 per category in that range). All emphasized the need for hand sanitizers and half responded to knowing that social distancing was practiced and knowing the cleaning procedures of the facility.

Demographics

Those who answered the survey were distributed across the age spectrum, weighted towards the older population, consistent with our parishioner's demographics.



41 of the 66 households are year-round residents with no significant travel plans. The remainder will be in Jensen Beach part time, with most here between November and May.

